



V-Seal Head Pad Dock Seal

Product Specifications



DESIGN HIGHLIGHTS

- V-shaped side pads provide better trailer access and seal hinge gaps on trailer swing-out doors
- Fixed-foam head pad seals gap between top of trailer and building wall
- 22 oz. vinyl-base fabric with protective pleated layer of TS-55® super fabric in critical wear areas provides exceptional wear resistance
- Full-length yellow stripes guide drivers to the dock
- Roll-formed galvanized steel framing reduces pressure on building wall
- 3-inch inside bottom flaps provide extra protection against outside elements

APPLICATION DATA

Door width: _____ ft. _____ in.

Door height: _____ ft. _____ in.

Dock height: _____ ft. _____ in.

Bumper protection*: _____ in.

(*Includes bumper projection and any building wall/foundation offset or cantilever)

TRUCKS AND TRAILERS SERVICED

Width: _____ Max. _____ Min.

Height: _____ Max. _____ Min.

Length: _____ Max. _____ Min.

Hydraulic tailgate: Yes No

Tailgate/step section size: _____ in

Rear step section: Yes No

Yard jockeys: Yes No

PROJECT INFORMATION

JOB NAME _____

ADDRESS _____

GENERAL CONTRACTOR _____

DISTRIBUTOR _____

QUANTITY _____

CERTIFIED FOR CONSTRUCTION

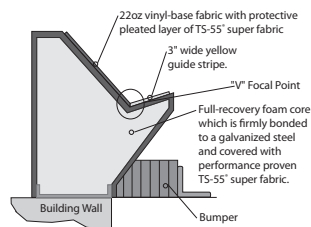
BY _____

COMPANY _____

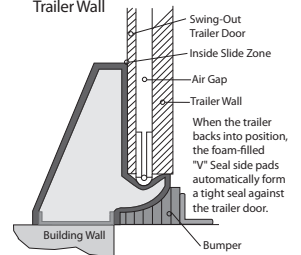
ADDRESS _____

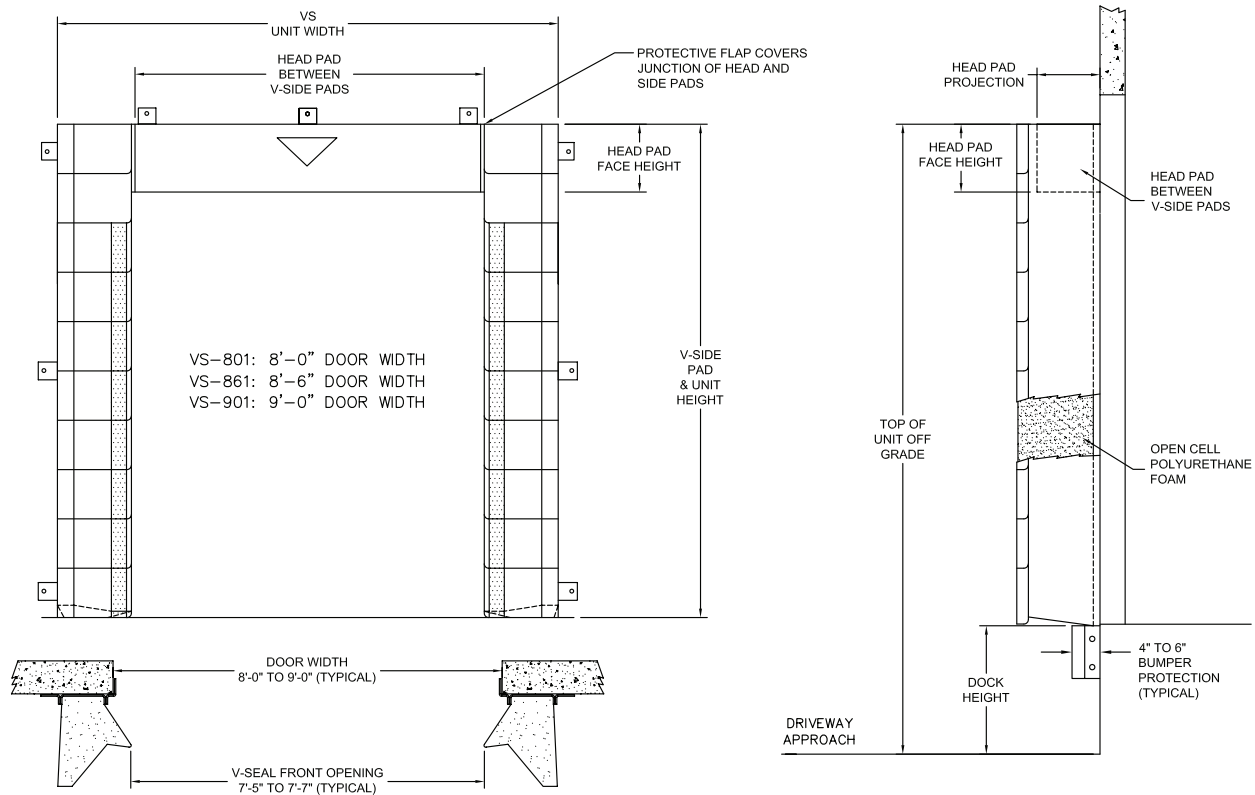
DATE _____

Dock Empty - Side Pad in Ready to Use Position



Truck Spotted - Side Pads Seal the Gap Between Swing Door and Trailer Wall





Quantity _____ **Model:** VS-801 (for 8'-0" wide doors) VS-861 (for 8'-6" wide doors) VS-902 (for 9'-0" wide doors)

Unit Width: 114" (VS-801) 120" (VS-861) 123" (VS-902)

Head Pad Back/Face: 12/12 18/18 12/18 WearMaster® head pad

Drop Curtain: None 12" 18" 24" Hook-Loop

Unit Height: _____" = (Door height + Head pad back height - Typical)

Base Material: 22 oz. vinyl base fabric with TS-55® wear pleats in critical wear areas

Color: Black Tan Brown Blue Green

Wood Blockout: None Tapered Non-Tapered

Blockout Top Projection: 0" 2" 4" 6" 8" 10" 12" _____"

Blockout Bottom Projection: 0" 2" 4" 6" 8" 10" 12" _____"

Foam Blockout: None Tapered Non-Tapered

Blockout Top Projection: 0" 2" 4" **Blockout Bottom Projection:** 0" 2" 4"

Head Pad Wear Face: None Yes

22 oz. vinyl 40 oz. vinyl 40 oz. CSM TS-55®

Black Tan Brown Blue Green

Bottom Flaps (3" Inside Flaps are Standard): 6" Inside _____" (Up to 12")

Options: Door numbers Flame retardant fabric & foam Flame retardant fabric only Flame retardant foam only

Side Pad Mounting Brackets: Flats & angles (VS-902) Angles 1 1/2" Offsets & angles (VS-801 & VS-861)

*Note: Consult factory for blockout application assistance.

*Conversions: To convert measurements to metric, see formulas below:

Inches x 25.4 = millimeters (Example: 4" x 25.4 = 101.6 mm)

Feet x .3048 = meters (Example: 12' x .3048 = 3.66 m)