



DSH Foam Dock Seal with Head Curtain

Product Specifications



DESIGN HIGHLIGHTS

- Top of hood is tapered forward and securely fastened to the building wall
- Tapered top is supported with thick wall aluminum pipe
- Fiberglass stays add stiffness to hood top to prevent sagging
- Hood curtain splits offer load relief and higher clearance
- Roll-formed galvanized steel framing reduces pressure on building wall, warranted for 5 years
- Endurance tested foam core is continuously bonded to frame surface with flexible, non-flammable adhesive
- A wide selection of durable coated fabrics provide maximum durability
- Highly resilient, open-celled polyurethane foam keeps original shape and compresses easily to extend seal life
- Side pad bottoms are tapered to avoid pinching and wear
- All pads are vented for air and moisture release
- Full length yellow stripes guide drivers to the dock
- Heavy-duty, galvanized steel mounting brackets included

APPLICATION DATA

Door width: _____ ft. _____ in.
 Door height: _____ ft. _____ in.
 Dock height: _____ ft. _____ in.

Bumper protection*: _____ in.

(*Includes bumper projection and any building wall/foundation offset or cantilever)

TRUCKS AND TRAILERS SERVICED

Width: _____ Max. _____ Min.

Height: _____ Max. _____ Min.

Length: _____ Max. _____ Min.

Hydraulic tailgate: Yes No

Rear step section: Yes No

Tailgate/step section size: _____ in

Yard jockeys: Yes No

PROJECT INFORMATION

JOB NAME _____

ADDRESS _____

GENERAL CONTRACTOR _____

DISTRIBUTOR _____

QUANTITY _____

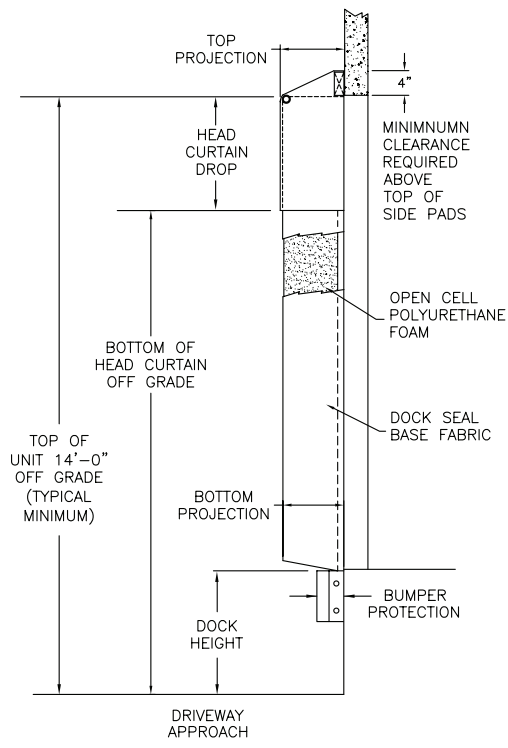
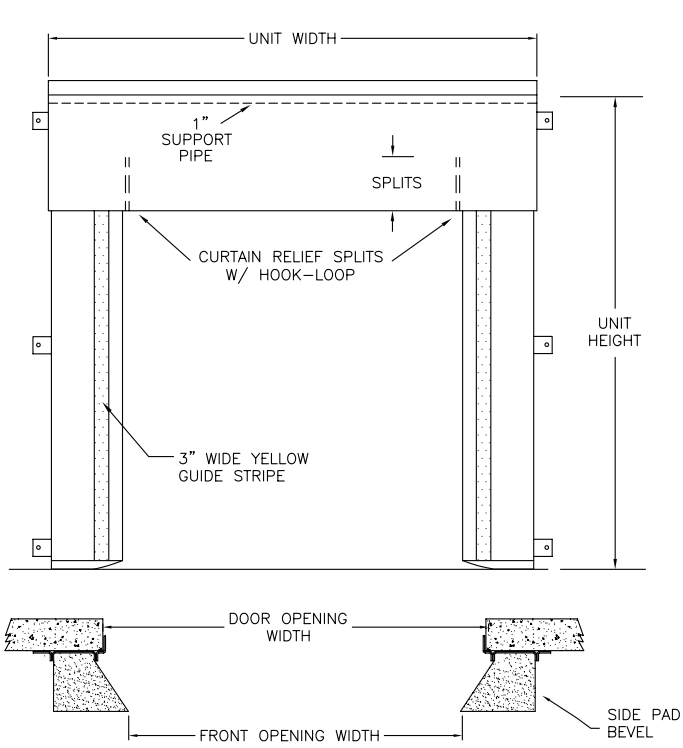
CERTIFIED FOR CONSTRUCTION

BY _____

COMPANY _____

ADDRESS _____

DATE _____



Quantity _____ Model: DSH

Head Curtain Width: (Distance to outside of side pads) _____ (Total inches)

Head Curtain Drop: 18" 24" 30" 36" 42" 48" _____

Head Curtain Splits: 6" 12" 18" 24" 30" 36" No split

Head Curtain Options: None Pull-rope assy 2" foam front Sectional foam front

Side Pad Height: _____ (Total inches)

Side Pad Back/Face: 6/10 8/12 10/12 12/12 12/15 8/15 6/14 10/18 8/23

Base Material: 22 oz. vinyl 40 oz. vinyl 16 oz. CSM 40 oz. CSM TS-55®

Color: Black Tan Brown Blue Green

Taper: Tapered Non-Tapered

Top Projection: 8" 10" 12" 14" 16" 18" 20" 22" 24"

Bottom Projection: 8" 10" 12" 14" 16" 18" 20" 22" 24"

Bottom Flaps: None 3" 6" Inside Inside & front All 3 sides D-Rings

Blockout: None Top projection _____" Bottom projection _____"

Wear Pleats: None WP4 WP8 WP16 Head and side pads Head pad corners

Material: 22 oz. vinyl 40 oz. vinyl 40 oz. CSM TS-55®

Color: Black Tan Brown Blue Green

Wear Face: None Head pad Side pad

Material: 22 oz. vinyl 40 oz. vinyl 40 oz. CSM TS-55®

Color: Black Tan Brown Blue Green

Reinforced Inside Face: Standard Side pad full height

Material: 22 oz. vinyl 40 oz. vinyl 40 oz. CSM TS-55®

Color: Black Tan Brown Blue Green

Options: Door numbers 24" Guide stripes Flame retardant fabric & foam Flame retardant fabric only Flame retardant foam only

Side Pad Mounting Brackets: None Flats & angles Angles 1 1/2" Offsets & angles

*Note: Consult factory for blockout application assistance.

*Conversions: To convert measurements to metric, see formulas below:

Inches x 25.4 = millimeters (Example: 4" x 25.4 = 101.6 mm)

Feet x .3048 = meters (Example: 12' x .3048 = 3.66 m)